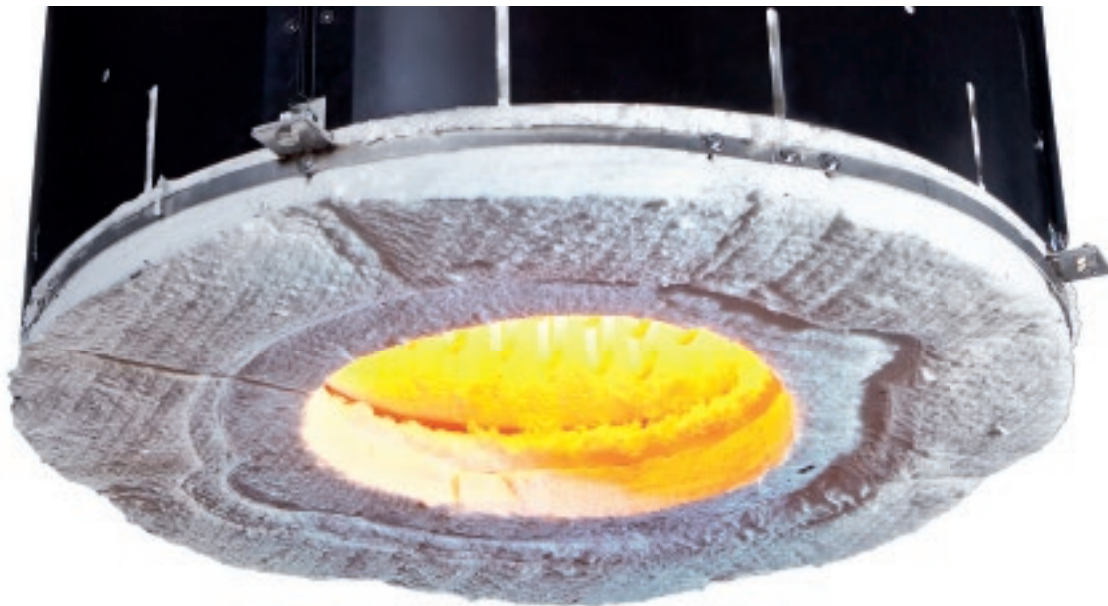


7

**GOOD
REASONS
FOR
CHOOSING
KANTHAL®
LADLE
HEATING
SYSTEMS**

KANTHAL®

Part of Sandvik Group



HOW CAN WE SAVE YOU MONEY?

By using electricity instead of gas for heating ladles, aluminum producers and steel foundries, depending on the process parameters, can reduce energy consumption by 50% or even up to 70%. But that's not all.

Kanthal® electric ladle heaters are safer and more environmentally friendly than gas heaters. They distribute heat more evenly – which results in better process control and extended liner lifetimes.

Visit www.kanthal.com/services to read more about energy and productivity services

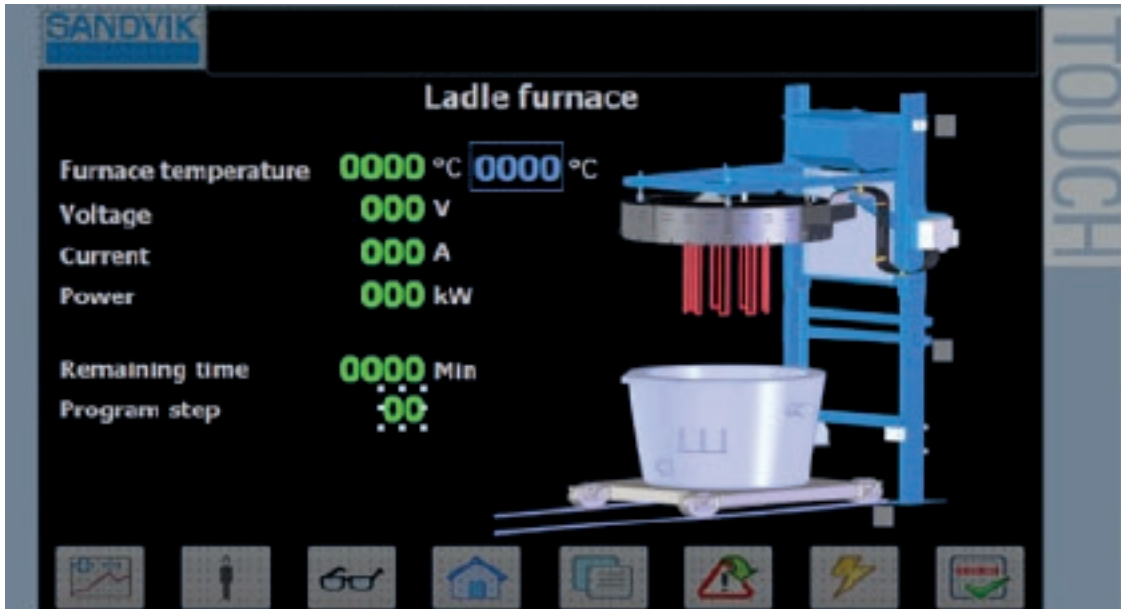


LET US DEVELOP THE LADLE YOU NEED!

Why should you go electric? Because the benefits are too great to miss. Thanks to a powerful yet consistent heating process, your ladle, as well as the heater itself will last longer. By eliminating overheating every ladle is preserved in good working condition – and that's money saved.

Even with the abundance and relative low cost of gas and other conventional fuels, when it comes to heating ladles for holding and transportation of molten metal, electrical technology is speeding ahead to provide true value-based alternatives.

Visit www.kanthal.com/services
to read more about product development



TALK TO A SIMULATION SPECIALIST!

Kanthal electric ladle heaters use an advanced monitoring and control system that optimizes performance and shortens process times. In addition, the heating elements are arranged in a reflector casing which allows you to accurately direct radiant heat toward the target area.

Visit www.kanthal.com/services
to read more about consultancy services

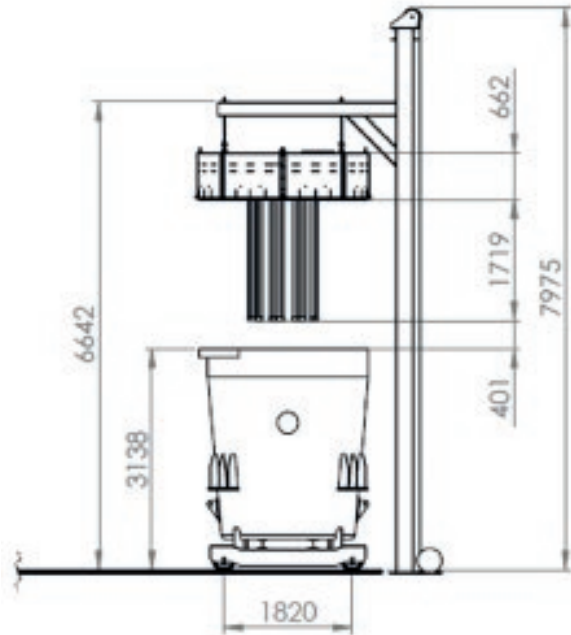


LET US MANAGE YOUR PROJECT FROM START TO FINISH!

COMPLETE INSTALLATIONS

Modern features are essential. But another great thing about Kanthal electric ladle heaters is that they can be ordered as a turn-key system, or we can supply them as components including everything from the heating element to the control cabinet and lifting device. Our team will also supervise the on-site installation to help you get started.

Visit www.kanthal.com/services
to read more about project management



TALK TO A LADLE SPECIALIST!

Kanthal® electric ladle heaters are equipped with precise temperature sensors and an advanced control system that is fully adaptable to your production line. We deliver CSA certified equipment that matches your communications protocols. Our electric heaters also include a programmable feature that starts preheating automatically at preset times. On some models, the heater can be automatically raised and lowered. The functions are all monitored via the innovative and user-friendly control interface.

Visit www.kanthal.com/services
to read more about consultancy services



ON DEMAND, ON SITE SERVICES

Visit www.kanthal.com/services to read more about maintenance and simulation services

TECHNICAL SUPPORT

Kanthal®'s electric ladle heaters are designed to keep you productive. Our heating experts provide technical support on site for preventive maintenance, repairs, parts replacement, scheduled service and refurbishment.

Wherever your operation is located our global service agreements will cover you.

SIMULATING

The results of electric ladle heating speak for themselves and to quantify the potential improvements, we offer a simulation service that evaluates performance based on your unique requirements.



**CREATE YOUR
SUSTAINABLE
FUTURE.
GO ELECTRIC
WITH KANTHAL®!**

We offer efficient solutions without unwanted side effects, such as localized overheating and NOx emissions.

The ladle heaters are used to pre-heat ladles up to temperatures of 1500°C (2732°F) and they can match any size ladle from ID 500 mm to ID 2100 mm (19.69 – 82.68 inches).

DISCOVER THE IMPACT OF KANTHAL® ELECTRIC LADLE HEATERS ON SOME OF YOUR MOST CHALLENGING APPLICATIONS.

50% HIGHER
ENERGY
EFFICIENCY

EXTENDED
LADLE
LIFETIME

MULTIPURPOSE
OPERATION

REDUCED
PROCESSING
TIME

ZERO CO
CO₂ OR NO_x
EMISSIONS

SAFE AND
QUIET WORK
ENVIRONMENT

UNMANNED
AND TIMED
OPERATION

7 GOOD REASONS FOR CHOOSING ELECTRIC LADLE HEATING

- More energy efficient: Net efficiency is 70% compared to only 20% for gas.
- No overheating: Better process control and longer service life
- Multi-purpose: Innovative design enables the same heater to be used for drying, pre-heating and holding
- Reduced process times
- No fumes: Cleaner and safer working environment
- Reduced CO₂ emissions
- Component or Turn-key solutions

VISIT WWW.KANTHAL.COM/SERVICES TO READ MORE